



Installation & Operation for Limit Switches for Pneumatic Actuators

Installation:

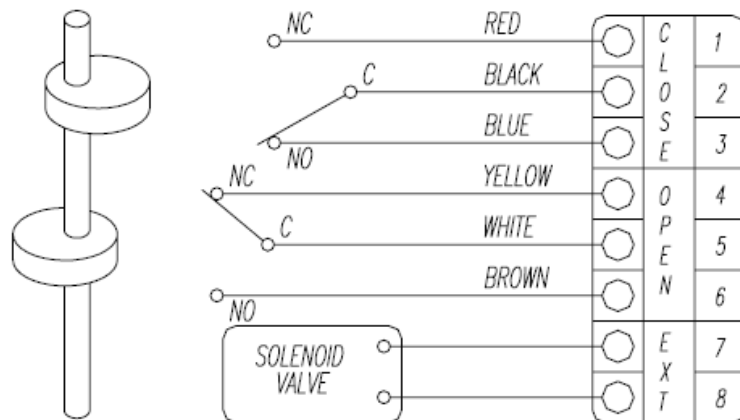
1. Attach proper mounting bracket to the switch box housing using the fasteners provided.
2. Align switch box shaft to top of actuator shaft and engage it.
3. Attach bracket to actuator using the fasteners provided (finger tight only).
4. Rotate the actuator twice and the switch and actuator will self-align.
5. Tighten the bracket to the top of actuator.

Switch Adjustment:

1. Loosen transparent dome cover screws and remove.
2. Remove the open close indicator. **WARNING:** Do not rotate indicator when engaged.
3. Loosen the switchbox cover screws and remove the cover.
4. Rotate the actuator clockwise.
5. Push down the top cam and turn until the switch is activated and then release. Engage the cam back onto the splined retainer. The spring will maintain cam engagement.
6. Rotate the actuator counter-clockwise.
7. Lift up bottom cam and turn until the switch is activated and then release. Engage the cam back onto the splined retainer. The spring will maintain cam engagement.
8. Place the cover on the switch box and tighten the screws. Take care to ensure that the cover gasket seal is properly located in seal groove.
9. Place the indicator on the shaft.
10. Place transparent dome on switch box so that the indicator display matches valve position. Adjust the dome and tighten the dome cover screws. Take care to ensure that the dome gasket seal is properly located.

Electrical Wiring:

1. Remove the switch box cover and indicator. (See switch adjustment sections 1-3).
2. Remove protection plugs from conduit entries and install conduit or plugs suitable for type of protection required. **WARNING:** To maintain the NEMA rating, the use of proper wiring methods per NEC and local codes is required.
3. Engage wires in terminal strip using a small screwdriver (1/8" blade).



Note: Conduit plugs supplied with the switch box are for transit purposes only. To ensure NEMA protection, any unused conduit entry must be closed with appropriate conduit plug.



connect with us on



Dixon Sanitary

N25 W23040 Paul Road • Pewaukee, WI 53072

ph: 800.789.1718 • 262.513.6900 • fx: 800.789.4046 • 262.513.4904

dixonvalve.com

Printed in the USA

scan to visit our website



PRV216_inhouse