

Gravity Drop Adapters



31440-225AL



41440-225AL



40447ST

*FKM seal available.

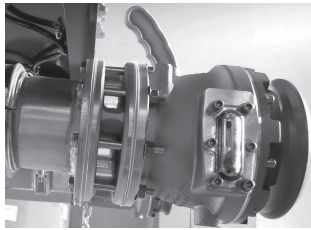
See pages 88-90 for repair parts.

Threaded connection available on request.

PART NO.	DESCRIPTION
31440-225AL	4" API to 3" drop adapter with Buna-N flat gasket
41440-225AL	4" API to 4" drop adapter with Buna-N flat gasket
40447ST	Heavy duty chain

TTMA Flanged Sight Flow Indicators

Features & Benefits:



5200-SFI shown mounted on petroleum tank



5200-SFI

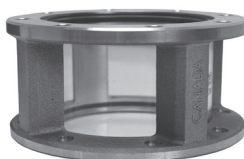
- Due to the proprietary blending of petroleum products, Dixon™ recommends that the thermoplastic tubing and the gaskets be immersion tested in the product to be handled to ensure compatibility (not compatible with crude oil).
- Durable cast aluminium housing replaces competitions all acrylic sight glass commonly found on tank trucks
- Allows for visual identification of the fuel grade prior to opening the valve
- Works with tank truck flanged butterfly valves found on gasoline trucks
- Low cost sight glass tube can be easily replaced
- Rated to 150 PSI

PART NO.	DESCRIPTION
5200-SFI-3	3" TTMA flange sight flow, 1 3/4" width, 3 1/2" inside diameter
5200C-SFI-3 ¹	3" TTMA flange sight flow, 1 3/4" width, 3 1/2" inside diameter, stainless retain ring
5200-SFI	4" TTMA flange sight flow, 1 3/4" width, 4" inside diameter
5200C-SFI ¹	4" TTMA flange sight flow, 1 3/4" width, 4" inside diameter, stainless retain ring

¹ Are compatible with crude oil.

Note: Maximum flange bolt torque is 200 in-lb (inch pounds)

Features & Benefits:



5201-SFI

- Due to the proprietary blending of petroleum products, Dixon™ recommends that the thermoplastic tubing and the gaskets be immersion tested in the product to be handled to ensure compatibility (not compatible with crude oil).
- Allows for visual identification of the fuel grade prior to opening the valve
- Works with tank truck flanged butterfly valves found on gasoline trucks
- Larger ID 4" flow indicator allows tank truck flanged butterfly valves to connect to either end of the indicator
- Rated to 150 PSI

PART NO.	DESCRIPTION
5201-SFI	4" TTMA flange sight flow, 3 1/4" width, 4" inside diameter
5201-SFI-3	3" TTMA flange sight flow, 3 1/4" width, 3 1/2" inside diameter